



MONTHLY MEMBERSHIP PROGRESS REPORT

District 5M 13

Results as of: 6/30/2015

GMT: DENNIS STEVENSON

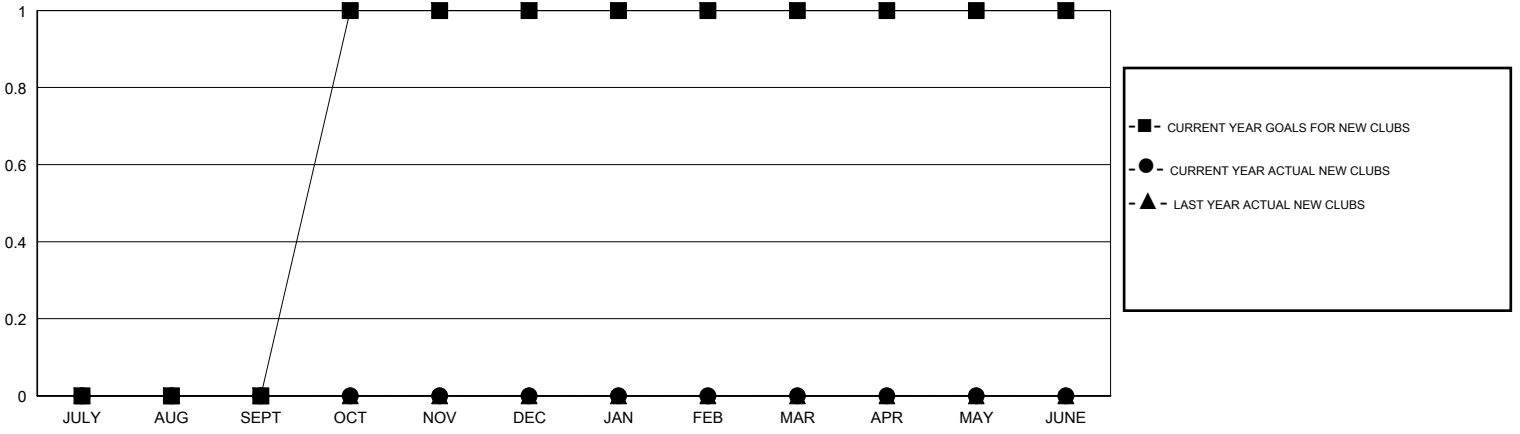
LOCATION MANITOBA

GMT CA 2

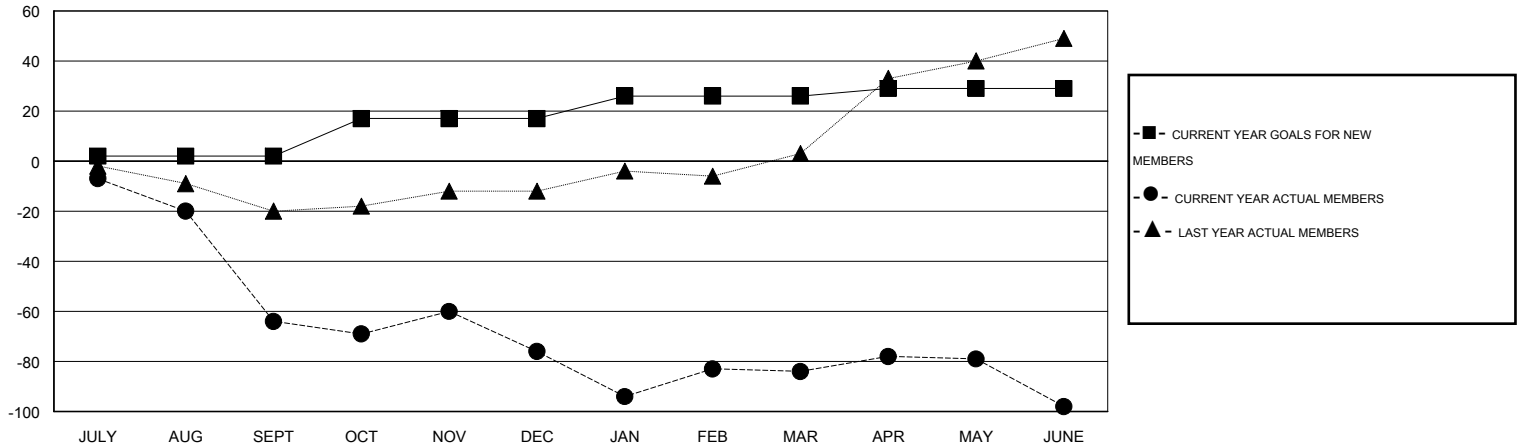
Clubs				
RESULTS FOR 2014-2015				
QUARTER	NEW CLUB GOAL	NEW CLUBS	DROPPED CLUBS	NET GAIN/LOSS
JULY/AUG/SEPT	0	0	2	-2
OCT/NOV/DEC	1	0	1	-1
JAN/FEB/MAR	0	0	2	-2
APR/MAY/JUNE	0	0	0	0

Members				
RESULTS FOR 2014-2015				
QUARTER	NEW MEMBER GOAL	CHARTER AND NEW MEMBERS ADDED	DROPPED MEMBERS	NET GAIN/LOSS
JULY/AUG/SEPT	2	3	67	-64
OCT/NOV/DEC	15	24	36	-12
JAN/FEB/MAR	9	30	38	-8
APR/MAY/JUNE	3	24	38	-14

GOALS AND ACTUAL NEW CLUBS CUMULATIVE



GOALS AND ACTUAL MEMBERS CUMULATIVE



DROPPED CLUBS: 5	
<u>DROPPED MEMBERS</u>	
DECEASED	11
CLUB CANCELLED	22
OTHER	146
TOTAL	179

36 CLUBS OF 61 ADDED 1 OR MORE NEW MEMBERS

GENDER DISTRIBUTION	
MALE	931 (77.71%)
FEMALE	267 (22.29%)

[CLICK HERE FOR HEALTH ASSESSMENT DATA](#)

FAMILY UNIT MEMBERS	191
HEAD OF HOUSEHOLD	95
NON-HEAD OF HOUSEHOLD	96